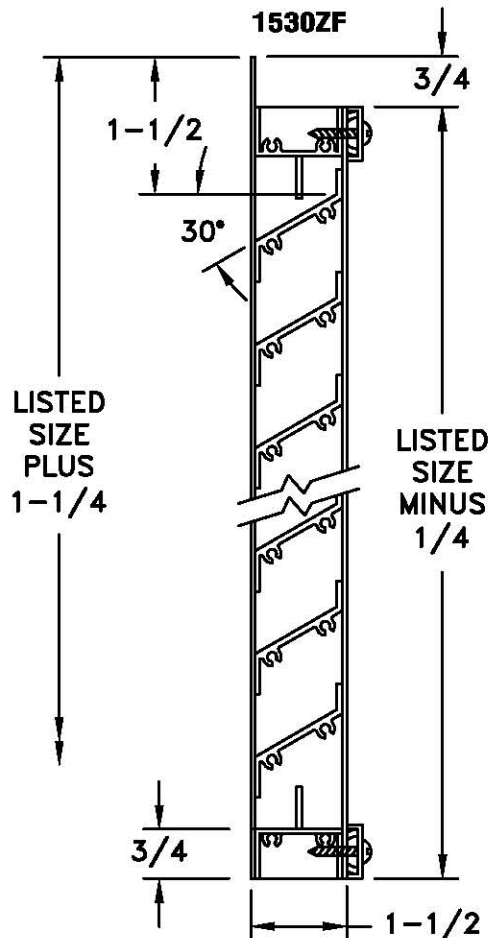
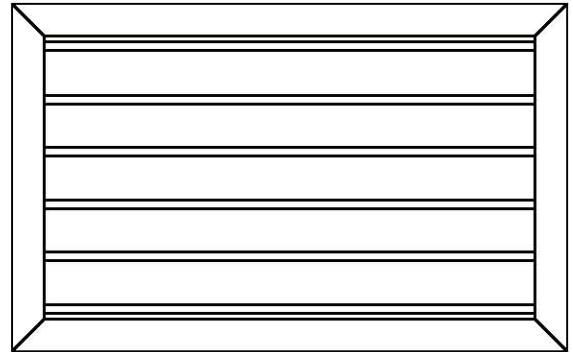
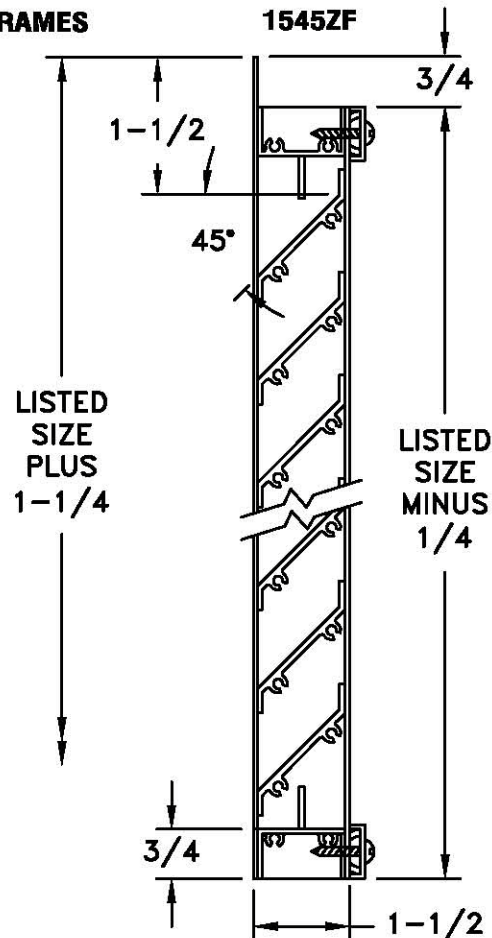


- EXTRUDED ALUMINUM CONSTRUCTION
- FIXED WEATHER RESISTANT BLADE LOUVER
- BLADES @ 30° OR 45° ANGLE
- 1.5 INCH LOUVER DEPTH
- CHANNEL (ZC) OR FLANGE (ZF) FRAMES
- AVAILABLE WITH BIRD/INSECT SCREEN
- MILL FINISH STANDARD; OPTIONAL CLEAR OR COLOR ANODIZED, BAKED ENAMEL DURACON AND FLUOROPOLYMER FINISHES AVAILABLE
- MINIMUM SIZE = 6" W X 6" H
- MAXIMUM ONE PIECE SIZE = 144 W X 84 H, LARGER SIZES AVAILABLE IN MULTIPLE SECTIONS. HIDDEN BLADE MULLIONS STANDARD ON CONTINUOUS LOUVER APPLICATIONS.



1530ZC

FLANGE FRAMES



1545ZC

CHANNEL FRAMES

JOB NAME: Chilmark Town Hall
 LOCATION: Chilmark, MA
 ARCHITECT: N/A
 ENGINEER: TE2 Engineering
 CONTRACTOR: N/A

SUBMITTED BY:
 Louver based on 320 square inches of free area.
 30"x30" louver recommended. Insect screen to be included with louver. Louver painted white to match exterior (TYP. 2)

DATE: 08/12/2013 SD-9700
1530ZC/ZF, 1545ZC/ZF
 1-1/2 Inch Fixed Louvers
 30° / 45° Blades
 Channel/Flange Frames